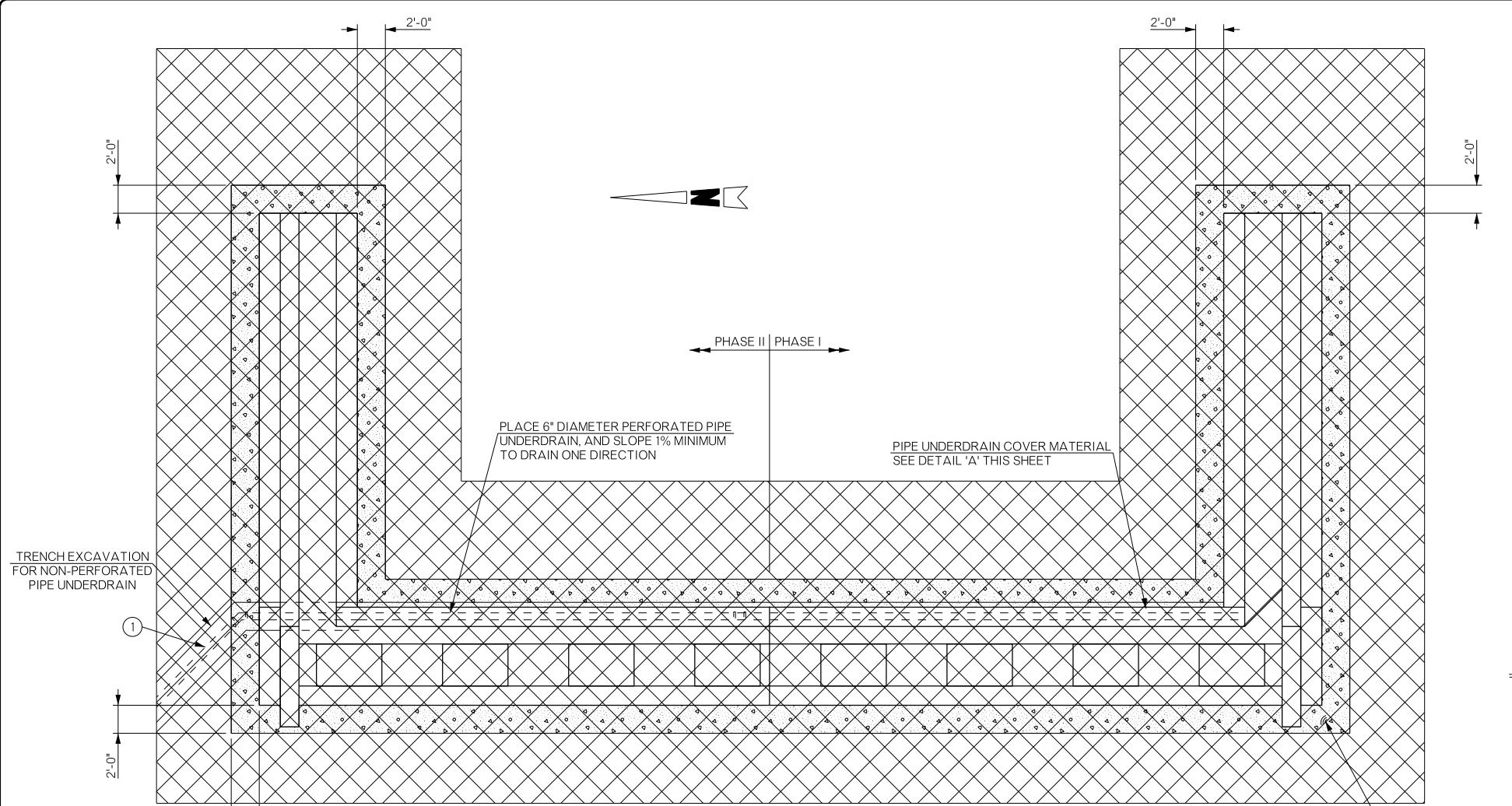
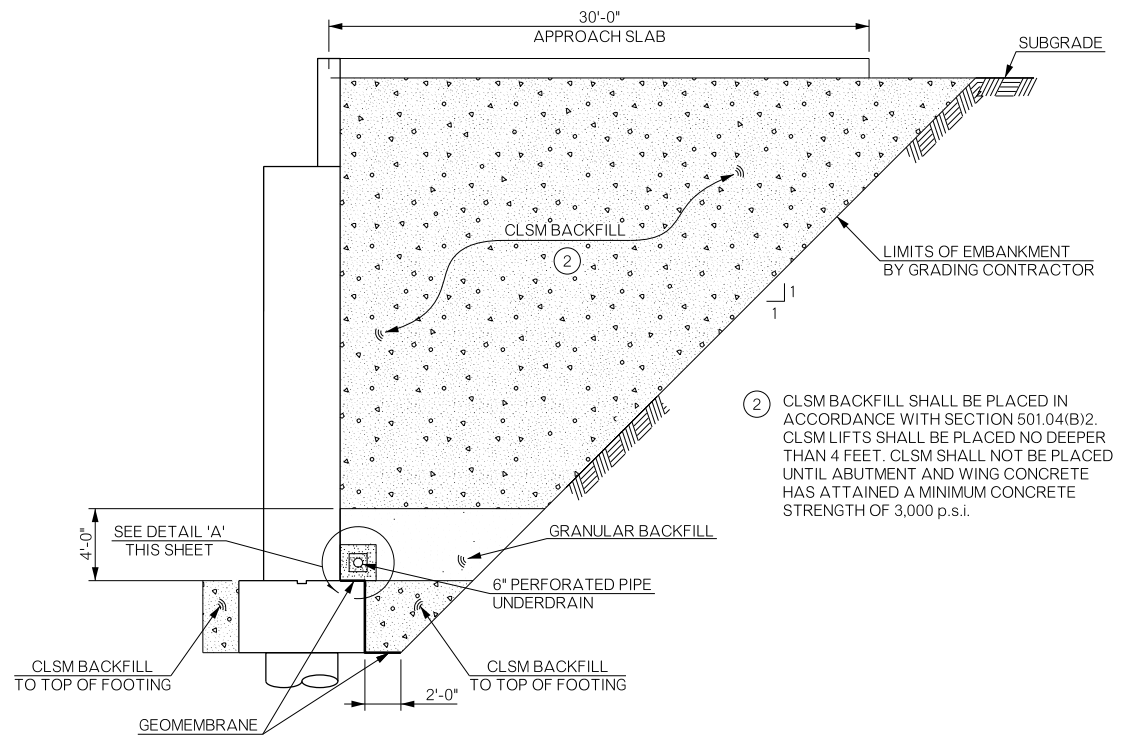


REVISIONS		
REV. NO.	DESCRIPTION	DATE



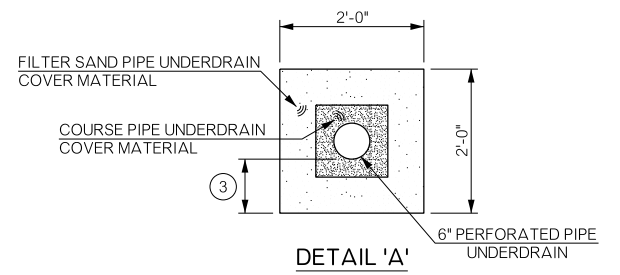
PLAN - ABUTMENT UNDERDRAIN

① THE ENGINEER MAY ADJUST THE EXTENT, LOCATION AND DEPTH OF THE 6" NON-PERFORATED PIPE UNDERDRAIN DURING CONSTRUCTION. INCLUDE THE COST OF PIPE UNDERDRAIN COVER MATERIAL (BOTH FINE SAND AND COARSE), FILTER FABRIC, AND EQUIPMENT AND LABOR FOR THEIR INSTALLATION IN THE CONTRACT UNIT PRICE OF 6" PERFORATED PIPE UNDERDRAIN ROUND. INSTALL AS SHOWN IN THE PLANS AND ON ROADWAY STANDARD PUD-3



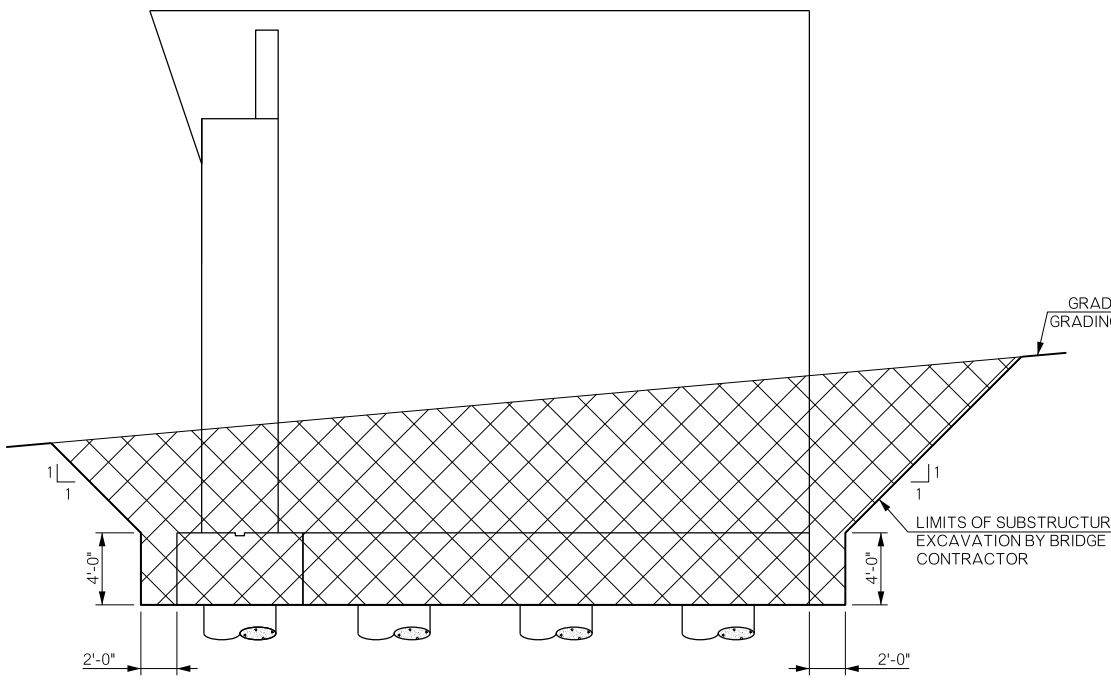
ABUTMENT BACKFILL DIAGRAM

② CLSM BACKFILL SHALL BE PLACED IN ACCORDANCE WITH SECTION 501.04(B)2. CLSM LIFTS SHALL BE PLACED NO DEEPER THAN 4 FEET. CLSM SHALL NOT BE PLACED UNTIL ABUTMENT AND WING CONCRETE HAS ATTAINED A MINIMUM CONCRETE STRENGTH OF 3,000 p.s.i.

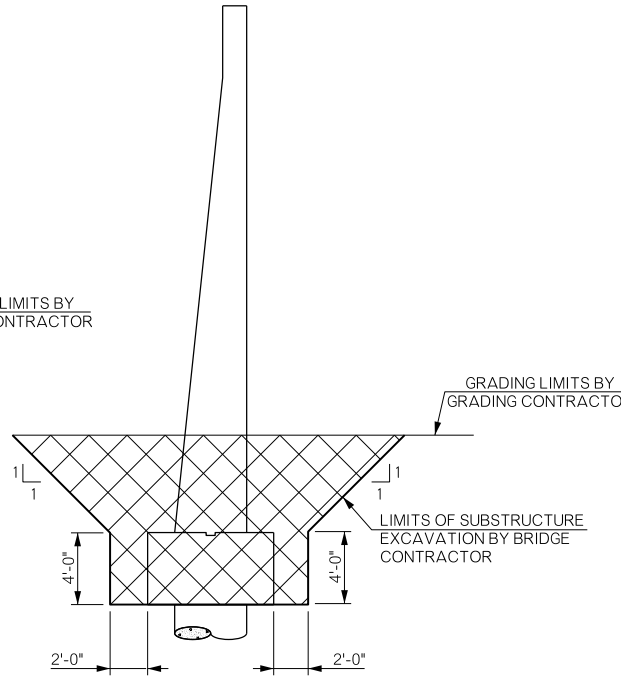


DETAIL 'A'

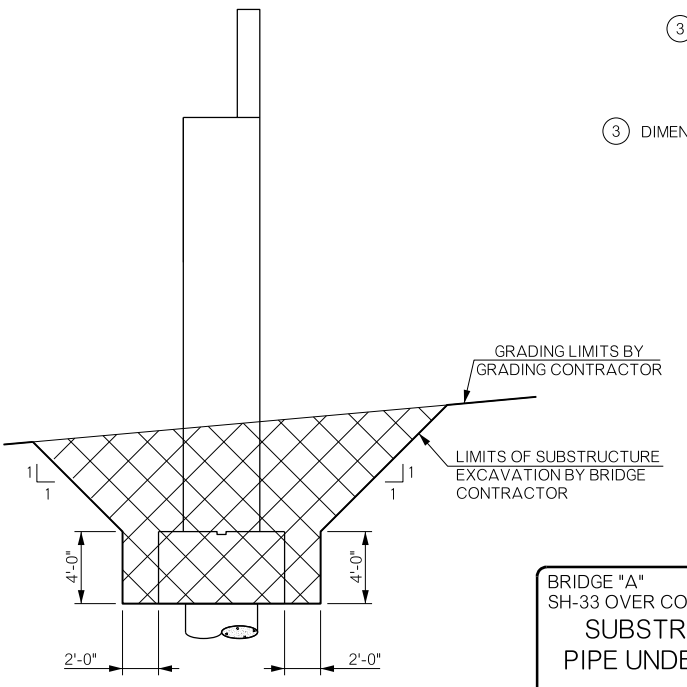
③ DIMENSION VARIES DUE TO SLOPE OF DRAIN



WINGWALL ELEVATION



SECTION THRU WINGWALL



SECTION THRU BRIDGE SEAT

BRIDGE "A" SH-33 OVER COTTONWOOD CREEK		LOGAN COUNTY	Design	GT	11/15
SUBSTRUCTURE EXCAVATION AND PIPE UNDERDRAIN ASSEMBLY DETAILS		ABUTMENT NO. 2	Detail	TIS	2/16
			Check	MAP	8/16
			Squad	PEARSON	
			Engr.	HERNANDEZ	
STATE OF OKLAHOMA		DEPARTMENT OF TRANSPORTATION			
JOB/PIECE NO. 21860(04)			SHEET NO. B015		